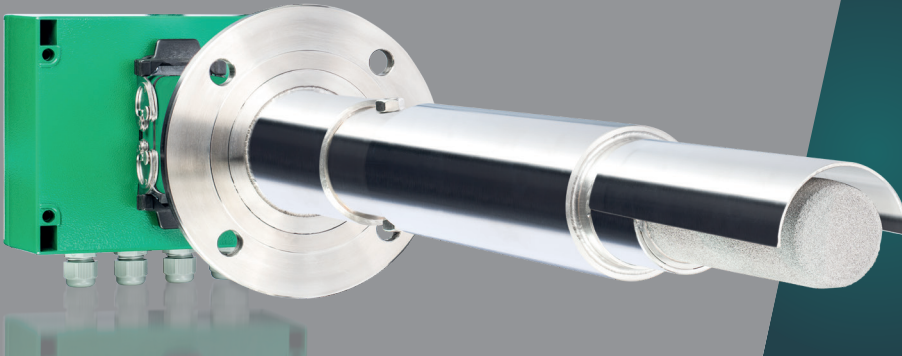


**ENSITU<sup>®</sup> 7000 O<sub>2</sub> transmitter probe**  
*For small sized boiler and furnace applications*

---



## Install, power up and measure



Suitable for high dust flue gas applications up to 600 °C

Decades of experience in design and construction of highest quality analyzers have resulted in the *ENSITU*® 7000, a budget friendly O<sub>2</sub> transmitter probe, made by *ENOTEC*.

Being able to withstand high flue gas temperatures up to 600°C and high dust loads, the *ENSITU*® 7000 allows a fast and continuous measurement.

Highly versatile and robust, the new *ENOTEC* analyzer is the ideal solution for process control in small to medium sized boilers, using all applicable fuels such as gas, oil and coal.

The *ENSITU*® 7000 works out of the box, needing no calibration or instrument air supply.

*ENSITU*® 7000 measures InSitu: diffusion takes place through the large filter with v-shield. Flue gas extraction and conditioning is not necessary.

Installation takes a matter of minutes: Install using an industry standard flange, power up and measure. Available in 3 lengths, the *ENSITU*® 7000 is designed for easy integration in existing boiler concepts.

### Technical specification

<b>Measuring principle</b>	Zirconium dioxide, InSitu	<b>Probe material</b>	1.4571 (316Ti)
<b>Probe insertion depth</b>	313 mm, 536 mm, 996 mm	<b>Flange connection</b>	corresponds to DN65 PN6
<b>Reaction time</b>	approx. 0,5 seconds	<b>Power supply voltage</b>	48 VDC, 5A max.
<b>Accuracy</b>	± 0,2 % O <sub>2</sub>	<b>Ambient temperature</b>	-40 °C ... +70 °C
<b>Process gas pressure</b>	950 - 1050 mbar	<b>IP code</b>	IP 66 / NEMA 4X
<b>Process gas temperature</b>	max. 600 °C	<b>Interfaces</b>	4 - 20 mA, <i>ENOTEC</i> Remote

**APPLICATIONS**  
for combustion control



Boilers using  
any fuel



Biomass  
plants



Furnaces

## Plug and play operation with smart analyzer control

Using your smartphone or tablet, *ENSITU*® 7000 can be completely controlled and configured. The *ENOTEC Remote* app is available for free.

Additionally, your process or analyzer data can be viewed in real-time, including a comprehensive data storage with process and analyzer history.

At any time, all saved data can be sent conveniently from your device for archiving or to *ENOTEC* for support.

The electronics are detachable for easier access if necessary and can be wall or cabinet mounted.

*ENSITU*® 7000 offers the longest lifespan using *ENOTEC*'s superior quality O<sub>2</sub> sensors and carries a worldwide 2 year warranty.



Representantes / Distribuidores Exclusivos

 Argentina

Tel: (+54 11) 5352 2500

Email: [info@dastecsrl.com.ar](mailto:info@dastecsrl.com.ar)

Web: [www.dastecsrl.com.ar](http://www.dastecsrl.com.ar)



Designed for easy integration in existing boiler concepts. Detachable electronics for more convenient access.

## Intuitive operation using *ENOTEC Remote*

Free *ENOTEC* app for remote diagnostics.

Configuration and operation via *ENOTEC Remote* app using your smartphone or tablet. Send process and analyzer data directly from the app for archiving or support purposes.



## Company

ENOTEC provides gas sensing solutions since 1980, manufacturing products with a high degree of accuracy, quality and durability, made completely in Germany. Our flexibility allows us to quickly develop solutions individually designed to meet your problems. On request, we also offer after delivery service concepts – the world over.

ENOTEC international sales and service network: ENOTEC USA, ENOTEC ASIA, ENOTEC UK, ENOTEC EAST EUROPE and over 50 well-trained and reliable partners worldwide.



## More products

### OXITEC<sup>®</sup> O<sub>2</sub> Analyzers



Fast, precise and robust  
InSitu O<sub>2</sub> measurement

### COMTEC<sup>®</sup> O<sub>2</sub> / CO<sub>e</sub> Analyzers



Combustion optimization  
with InSitu O<sub>2</sub> / CO<sub>e</sub> analysis

### AQUATEC<sup>®</sup> O<sub>2</sub> / H<sub>2</sub>O Analyzers



Optimize drying  
processes with reliable  
O<sub>2</sub> / H<sub>2</sub>O measurement

### CEMTEC<sup>®</sup> Gas sampling system



Continuous process control  
in high temperature and  
high dust processes



Watch the ENOTEC product videos  
on our YOUTUBE channel.  
[www.youtube.com/ENOTECsensors](http://www.youtube.com/ENOTECsensors)



enotec-sensors