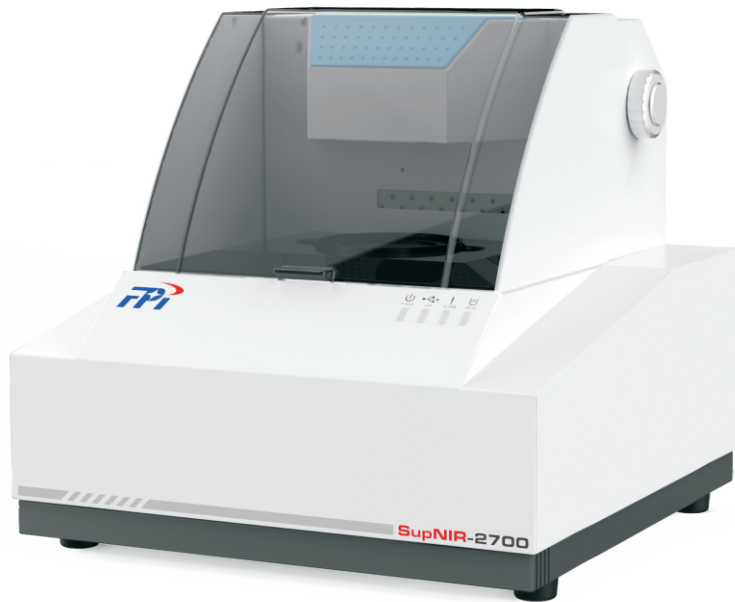
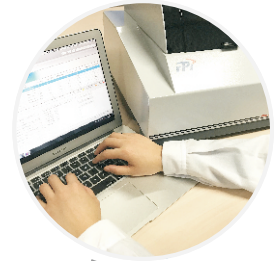


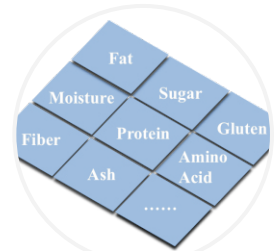
# SupNIR 2700 Analyzer



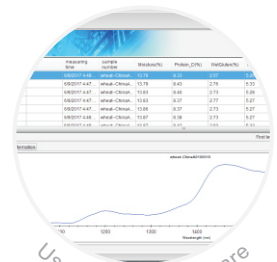
Fast



Easy-to-Use

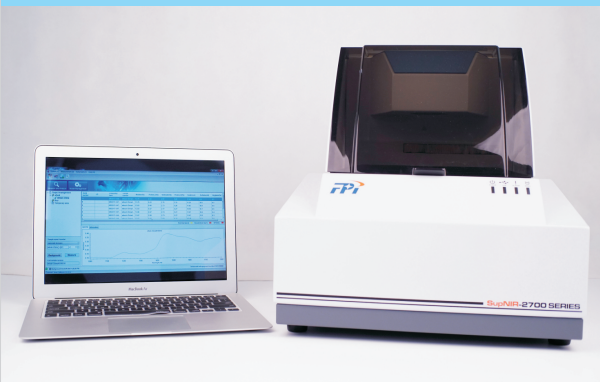


Multi-Parameters



User Friendly Software

Fast and Reliable Analysis for Grain, Food and Feed



- Fast: 10-second Analysis of All Type of Samples
- High Performance: High Accuracy, Repeatability, Stability and Reliability
- Easy to Implement, Operate and Maintain
- Modern Technology and a wide range of Available Calibrations Free of Charge
- User-Friendly Software with Multiple Statistics Analysis

## IDEAL FOR

- Incoming raw material
- Laboratory testing
- Final product release
- Products pricing
- Research

## High Performance

- Wavelength repeatability <math><0.01\text{nm}</math>
- Wavelength accuracy <math><0.1\text{nm}</math>
- Background noise <math><50\mu\text{A}</math>
- Analysis time <math><10\text{s}</math>

## Industries:

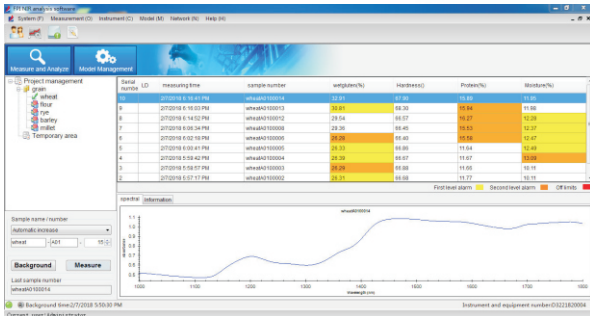
Grain, Oilseed Processing, Flour Milling, Starch Production, Sugar Production, Ethanol Production, Raw Material of Feed, Feed Final Products

## Parameters:

Moisture, Protein, Fat/Oil, Ash, Fiber, Starch, Amino Acid, Sugar, Dry Matter and more

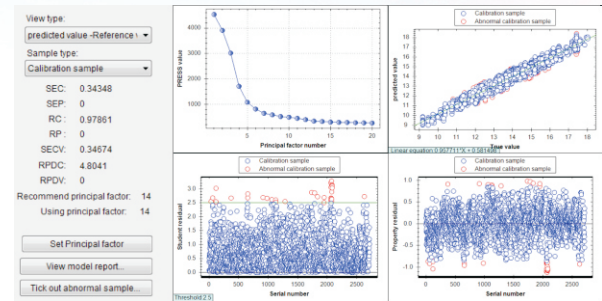


## Easy operation with user-friendly software



Versatile results display with warning and action displays for outlier and product limits.

Easy and reliable software operation ensures stable analysis results.



User can develop their own calibrations with total autonomy under the guidance of engineer.

Online data analysis and multiple statistics functions.

## Hassle-Free maintenance



The SupNIR 2700 analyzer are designed to be easily maintained by the customer, thereby decreasing down time and maintenance costs. The lamp has expected >5,000 hours life and can be easily monitored in the program and changed by the user.

The instrument itself is designed for long life and reliability with quality components and no fans, lasers, desiccators or cooling system to fail.

## Installation and training



The SupNIR is designed for easy setup and configuration. Upon delivery, a factory trained product specialist will perform diagnosis to verify instrument performance and then install calibrations and set up products according to customer requirements.

As part of the installation, the FPI products specialist will train the operator and managers in all aspects of routine operation, configuration, diagnostics and data management.

## A wide range of calibrations

Calibrations	Parameters								
Wheat(granular)	Moisture	Crude protein(Wet)	Crude protein(Dry)	Wet gluten	Hardness	Falling number	Dry gluten		
Wheat(Milled)	Moisture	Crude protein(Dry)	Crude protein(Wet)	Crude ash	Wet gluten				
Millet	Moisture	Lysine_D	Amylose_D	Protein_D	Fat_D	Gel	Vitamin B1		
Rice	Moisture	Crude protein	Amylose	Eating quality					
Flour	Moisture	Crude ash	Wet gluten	Crude protein	Water absorption	Falling number			
Soybean(granular )	Moisture	Crude protein(Wet)	Crude oil(Wet)	crude protein(Dry)	Crude oil(Dry)				
Soybean meal	Moisture	Crude protein	Crude ash	Crude oil	Crude fiber	PS	UA		
Corn(granular)	Moisture	Crude protein	Volume weight	Crude oil	Starch	Crude ash	Crude fiber		
Cottonseed	Moisture	Crude protein	Oil						
Cottonseed meal	Moisture	Crude protein	Crude ash	Crude oil	Crude fiber	PS			
Rapeseed	Moisture	Crude oil	Glucosinolate	Erucic acid	Palmitic acid C16:0	Eicosenoic acid	Crude protein		
Rapeseed cake	Moisture	Crude protein(Wet)	Crude protein(Dry)	Crude ash	Crude fiber	Crude oil(Wet)	Crude oil(Dry)		
Sunflower seeds	Moisture	Oil							
Sunflower meal	Moisture	Crude protein	Residual oil						
DDGS	Moisture	Crude protein	Crude ash	Phosphorus	Crude oil	Crude fiber			
Pig feed	Moisture	Crude protein	Crude ash	Calcium	Phosphorus	Salt	Crude oil	Crude fiber	
Cattle feed	Moisture	Crude protein	Crude ash	Calcium	Phosphorus	Salt	Crude oil	Crude fiber	
Chicken feed	Moisture	Crude protein	Crude ash	Calcium	Phosphorus	Salt	Crude oil	Crude fiber	
Fish meal	Moisture	Crude protein	Crude ash	Calcium	Phosphorus	Salt	Crude oil	Amoni acid	
Meat powder	Moisture	Crude protein	Crude ash	Calcium	Phosphorus	Crude oil			
Sow feed	Crude ash	Moisture	Crude protein	NaCl					
Feather meal	Moisture	RProtein	VBN	Protein	RPratio	Ash	Fat	AV	
	Sample number > 400			Sample number > 200			Sample number < 200		

FPI has focused on grain and feed industries for more than 25 years with NIR instruments for quality control to meet its needs. And customers are free of charge for all 76 calibrations, also they could develop their own calibrations with total autonomy.

## Technical specifications

Wavelength range	1000-1800 nm, SupNIR 2720	1000-2500 nm, SupNIR 2750
Light Source	Tungsten halogen lamp with expected lifespan more than 5000 hours, User changeable via specific disassemble tool	
Measurement mode	Diffuse reflectance	
Detector	High Performance ultra-cooled InGaAs (Indium Gallium Arsenide) detector to -25°C, dual stage temperature stabilized	
Optical Bandwidth	10.95 ± 0.3 nm @ 1395.5 nm	
Background noise	Less than 50 µA	
Sample volume	Flexible 50-150 ml, 3 types of sample cup	
Analysis time	6-10 sec. (30 scans / sample =6s, scan speed= 5 times/ sec.)	
Wavelength accuracy	<0.1 nm to traceable standard reference material	
Ambient temperature	5-35 °C	
Ambient humidity	<90% RH, < 85% RH recommended	
Power Supply	198-242 V, frequency 50 Hz, 0.5 A	
Dimensions (L × W × H)	403 × 391 × 374 mm	
Weight	18kg, 40 lbs.; 40kg, 88 lbs. with veneer package	

### Focused Photonics (HangZhou) Inc.

760 Bin'an Road, Binjiang District  
Hangzhou 310052  
China

Tel: +86 571 8501 2188

<http://www.fpi-inc.com/en/> **Focused Photonics Inc.**



## DASTEC S.R.L.

Representantes / Distribuidores Autorizados

Argentina

Tel: (+54 11) 5352 2500

Email: [info@dastecsr.com.ar](mailto:info@dastecsr.com.ar)

Web: [www.dastecsr.com.ar](http://www.dastecsr.com.ar)